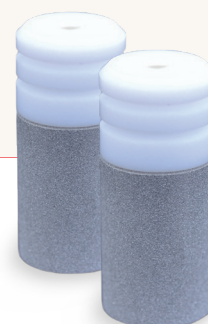


HPLC Suction filter with mobile phase cleaning function

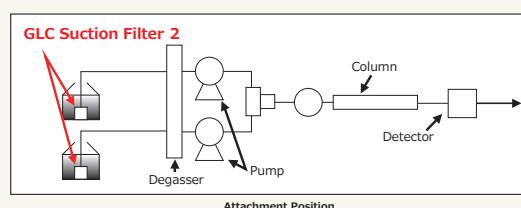
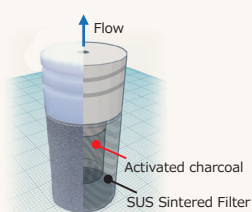
GLC Suction Filter 2

Features

- Removes contaminants at the most upstream of HPLC system
- Does not affect system volume
- Available for LC/MS



The GLC Suction Filter 2 is the most upstream consumable part of a HPLC system and is useful for removing contaminants in the mobile phase. The product is easy to install and can be replaced by the user.

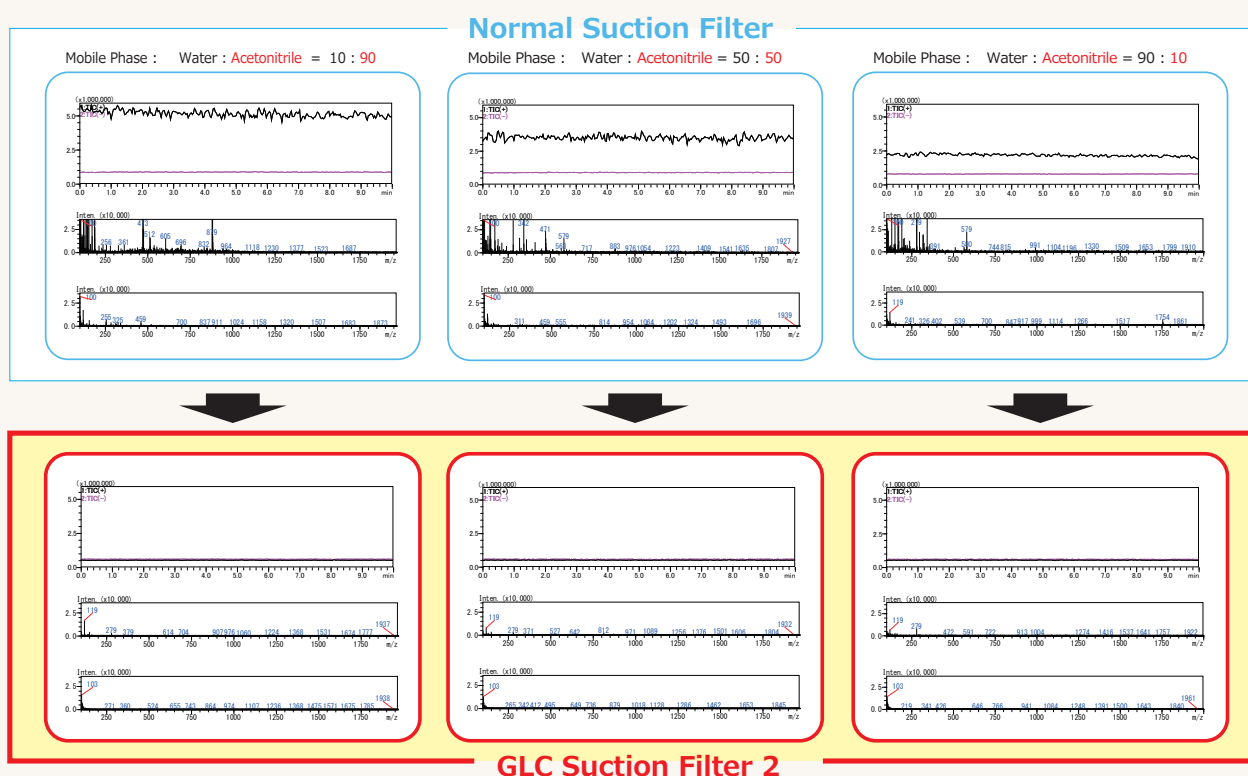


Removal Effect of GLC Suction Filter 2 for LC/MS

Removal of contaminants in the mobile phase by GLC Suction Filter 2 was evaluated. A mixture of acetonitrile and water (1/9, 5/5, 9/1) was used as the mobile phases. In all case, the removal of contaminants was confirmed and the noise level of the TIC was also reduced.

Analytical Conditions

Instruments : Nexera X2
Flow Rate : 0.2 mL/min
Detection : MS (ESI), Scan Mode (100 to 2000 m/z, positive, negative)



Product Information

| P/N | Internal Volume | Qty. |
|--------------|-----------------|------|
| 370-02010-01 | 0.7mL | 1 |

Please read the manual carefully and pre-condition before use.

- *The suction tube is not included.
- *3mm outer diameter suction tube can be connected.
- *When using ion-pair reagents in the mobile phase, the ion-pair reagent is retained in the product, and retention time and peak shape may be affected.
- *Bleed noise from this product may be seen.
- *This product does not remove all impurities.
- *If impurities are not retained, ghost peaks may be detected. In this case, replace the product.
- *The recommended replacement period is after passing 60L of mobile phase or 1 year after use.

Shimadzu GLC Ltd.

5F CS-Tower Bldg., 5-20-8, Asakusabashi, Taito-ku, Tokyo 111-0053, Japan
<https://solutions.shimadzu.co.jp/glc>
gusupport@glc.shimadzu.co.jp

MK-FL-20-E0001A