

# Enhanced performance

## Sensitivity and Robustness



Liquid Chromatograph  
Mass Spectrometer

# LCMS-8060NX



- Automated support functions utilizing digital technology, such as M2M, IoT, and Artificial Intelligence (AI), that enable higher productivity and maximum reliability.
- Allows a system to monitor and diagnose itself, handle any issues during data acquisition without user input, and automatically behave as if it were operated by an expert.
- Supports the acquisition of high quality, reproducible data regardless of an operator's skill level for both routine and demanding applications.

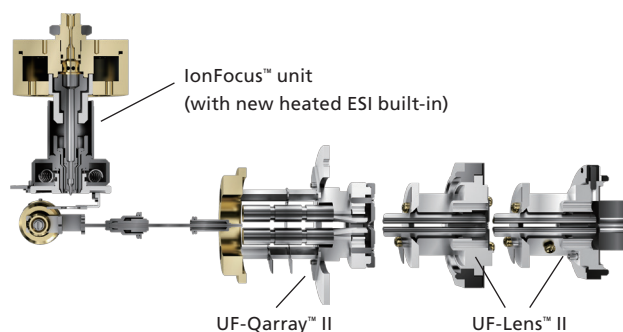
The LCMS-8060NX is a triple quadrupole mass spectrometer with world-class sensitivity and detection speeds. It boasts increased robustness and ease of use as well as Analytical Intelligence functions to maximize your laboratory's output.

### World-class sensitivity and speed

Inheriting the excellent speed and sensitivity of the LCMS-8060, the LCMS-8060NX improves the desolvation efficiency through increasing the ESI heat transfer efficiency and the maximum gas flow rate. Optimum ionization conditions can be set for a wider range of compounds, enabling even higher sensitivity in analysis.

### High robustness minimizes downtime

The newly-developed IonFocus™ unit introduces ions into the mass spectrometer with greater efficiency while expelling unneeded neutral particles, reducing matrix effects and contamination inside the instrument. The new ion guide UF-Qarray™ II and the UF-Lens™ II increase the robustness of the instrument while maintaining a high ion transmission rate.

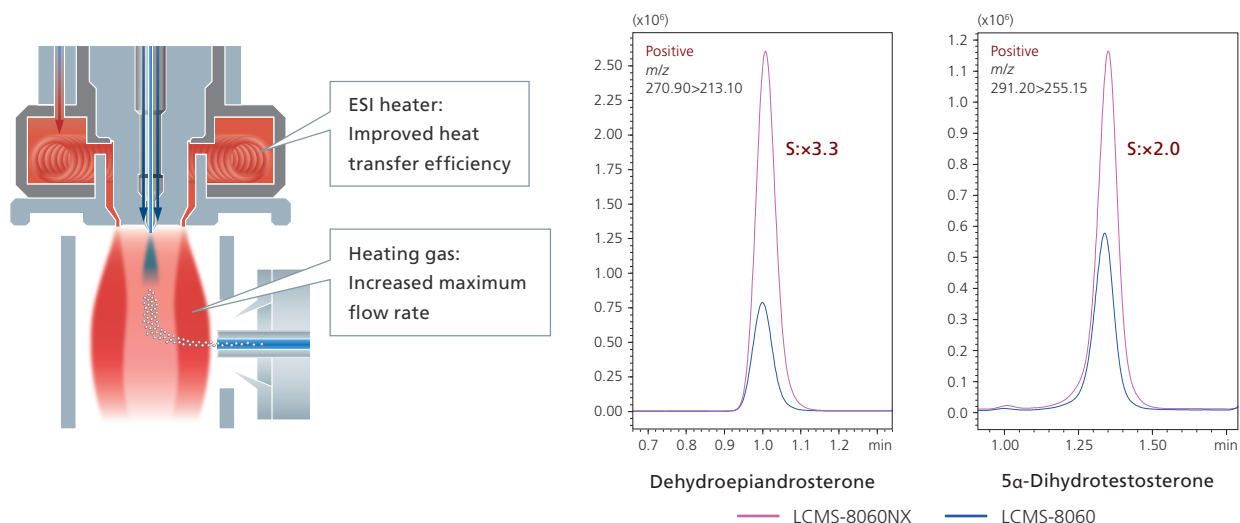


### Excellent ease-of-use for greater workflow efficiency

New parameters enable high sensitivity without manual optimization, while features such as automated start-up and shutdown (with LabSolutions Connect™ MRM) allow unattended operation. Combining the MS with the Nexera™ series UHPLC provides multiple Analytical Intelligence functions to further increase the efficiency of your overall workflow.

## Increased desolvation efficiency for higher sensitivity

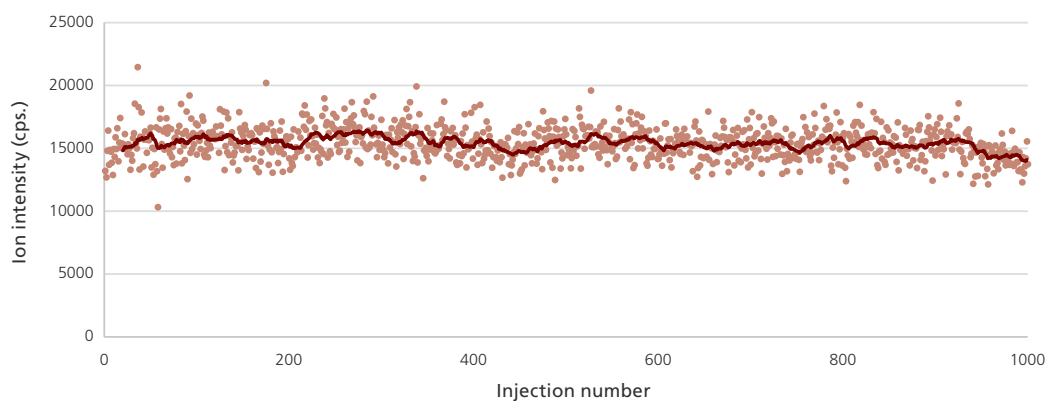
A new heat-assisted design improves the desolvation efficiency and dramatically enhances the sensitivity for challenging molecules such as steroid hormones.



## Superior robustness

The LCMS-8060NX employs new ion guides, the UF-Qarray II and the UF-Lens II, to increase robustness while maintaining high ion transmission efficiency. Improved robustness means higher laboratory throughput as maintenance interval times increase.

The urine metabolite data shown below provides confidence for the analysis of biological matrices. After the analysis of 1000 urine samples, prepared only by dilution with water, the LCMS-8060NX delivers superior data stability without loss of sensitivity.



Analytical results of repeated injections of metabolites in urine

The Analytical Intelligence logo, IonFocus, UF-Qarray, UF-Lens, LabSolutions Connect and Nexera are trademarks of Shimadzu Corporation.



**For Research Use Only. Not for use in diagnostic procedures.**

This publication may contain references to products that are not available in your country. Please contact us to check the availability of these products in your country.

Company names, products/service names and logos used in this publication are trademarks and trade names of Shimadzu Corporation, its subsidiaries or its affiliates, whether or not they are used with trademark symbol "TM" or "®". Third-party trademarks and trade names may be used in this publication to refer to either the entities or their products/services, whether or not they are used with trademark symbol "TM" or "®". Shimadzu disclaims any proprietary interest in trademarks and trade names other than its own.

The contents of this publication are provided to you "as is" without warranty of any kind, and are subject to change without notice. Shimadzu does not assume any responsibility or liability for any damage, whether direct or indirect, relating to the use of this publication.

Shimadzu Corporation

[www.shimadzu.com/an/](http://www.shimadzu.com/an/)