

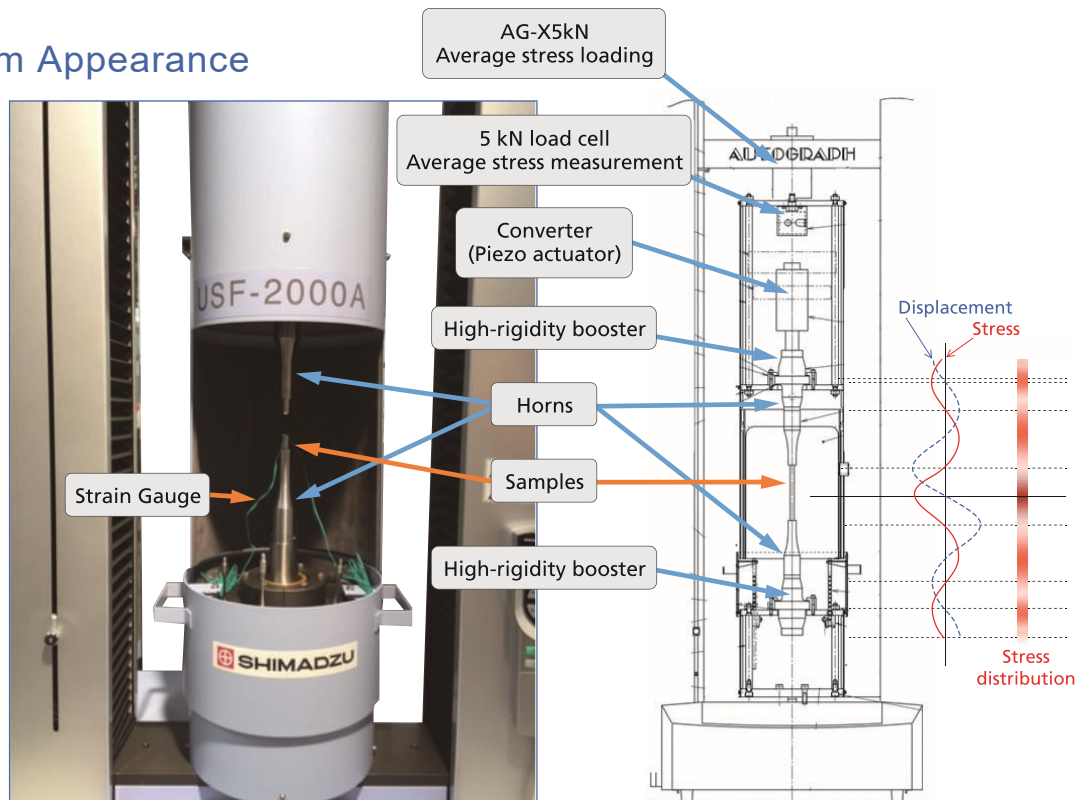
# Ultrasonic Fatigue Testing System with an Average Stress Loading Mechanism

## For Gigacycle Fatigue Tests with Average Stress Loaded

Actual components are rarely used under conditions in which the average stress is zero. Despite this, the USF-2000A, a standard ultrasonic fatigue testing system, can only perform testing under zero average stress conditions.

Using an ultrasonic fatigue testing system equipped with an average stress loading mechanism, gigacycle fatigue tests can be performed with average tensile stress loaded.

### System Appearance



## Ultrasonic Fatigue Testing System Effective for Gigacycle Fatigue Tests

With fatigue tests of high-strength steels, it is evident that internal fracture (fish-eye fracture), which is caused by inclusions and other micro defects, occurs at 107 cycles or more, a value considered the conventional fatigue limit.

An ultrasonic fatigue testing system is extremely effective when performing this sort of gigacycle fatigue test. (With a 100 Hz fatigue testing system, this would take 3 years, but if a 20 kHz ultrasonic fatigue testing system is used, testing can be completed in one week.)

# Main Specifications

## 1) Test Frequency: 20 kHz ± 500 Hz

- The recommended test range is 20 kHz ± 30 Hz.
- The test frequency is determined by the resonance frequency of the sample.

## 2) Horn End Face Amplitude

Min. approx. ±10 μm

Max. approx. ±50 μm

- The minimum and maximum amplitudes are the end face amplitude values at amplitude outputs of 20 % and 100 % respectively. Accordingly, the minimum and maximum amplitude values will change somewhat depending on the shape of the sample.

## 3) Test Stress

Standard circular tapered sample

Stress Min. 237 MPa

Max. 1186 MPa

- The test stress range can be changed by changing the sample shape.
- The minimum and maximum values are calculated with the end face amplitude values of 10 μm and 50 μm respectively.
- These are the values when the stress is within the elasticity range.

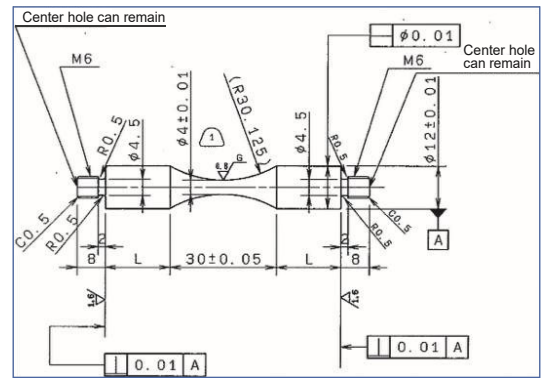
## 4) Average Stress

Max. 1.5 kN (tensile only)

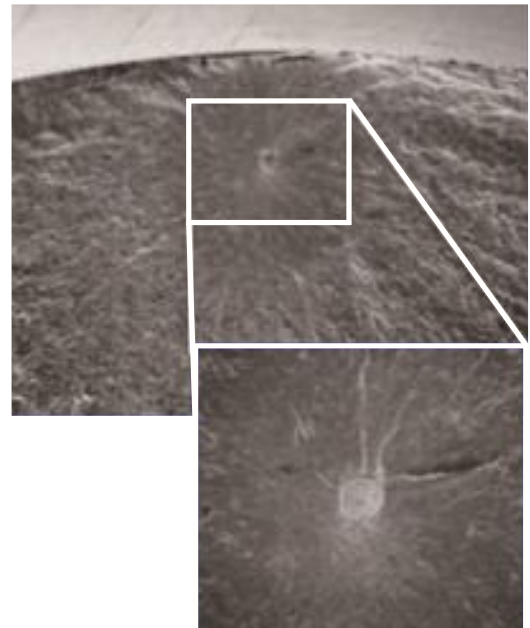
- Average stress loads exceeding 1.5 kN are possible, but will have an impact on the service life of the horn.

### Components

1	Ultrasonic resonance system Power supply, converter, booster (1 pair), horn (1 pair)
2	Personal computer (OS Windows 7) ADA/PIO interface board
3	Software Ultrasonic test control measurement software
4	Cooling system Air dryer, air piping • A separate 140 L/min air source is required.
5	Strain meter unit (option)
6	AG-X plus Autograph 5 kN + 250 extension
7	Average stress loading mechanism



Standard Circular Tapered Sample



Surface of the Fatigued Fracture Originating from the Inclusion



Shimadzu Corporation

www.shimadzu.com/an/

**For Research Use Only. Not for use in diagnostic procedure.**

This publication may contain references to products that are not available in your country. Please contact us to check the availability of these products in your country.

Company names, product/service names and logos used in this publication are trademarks and trade names of Shimadzu Corporation or its affiliates, whether or not they are used with trademark symbol "TM" or "®". Third-party trademarks and trade names may be used in this publication to refer to either the entities or their products/services. Shimadzu disclaims any proprietary interest in trademarks and trade names other than its own.

The contents of this publication are provided to you "as is" without warranty of any kind, and are subject to change without notice. Shimadzu does not assume any responsibility or liability for any damage, whether direct or indirect, relating to the use of this publication.